

DIY Small Buffet

By **Cherished Bliss**

Difficulty
Moderate

This simple and easy to build Small Kitchen Buffet is the perfect way to add storage without taking up a lot of room. It can easily be customized to fit any style but is shown here with an industrial farmhouse finish.





Tools

Kreg Tools



Other Tools

Circular Saw (cordless)

Miter Saw

Square

Table Saw

Tape Measure

Drill (cordless)

Nail Gun

Sander

Materials

Wood Products

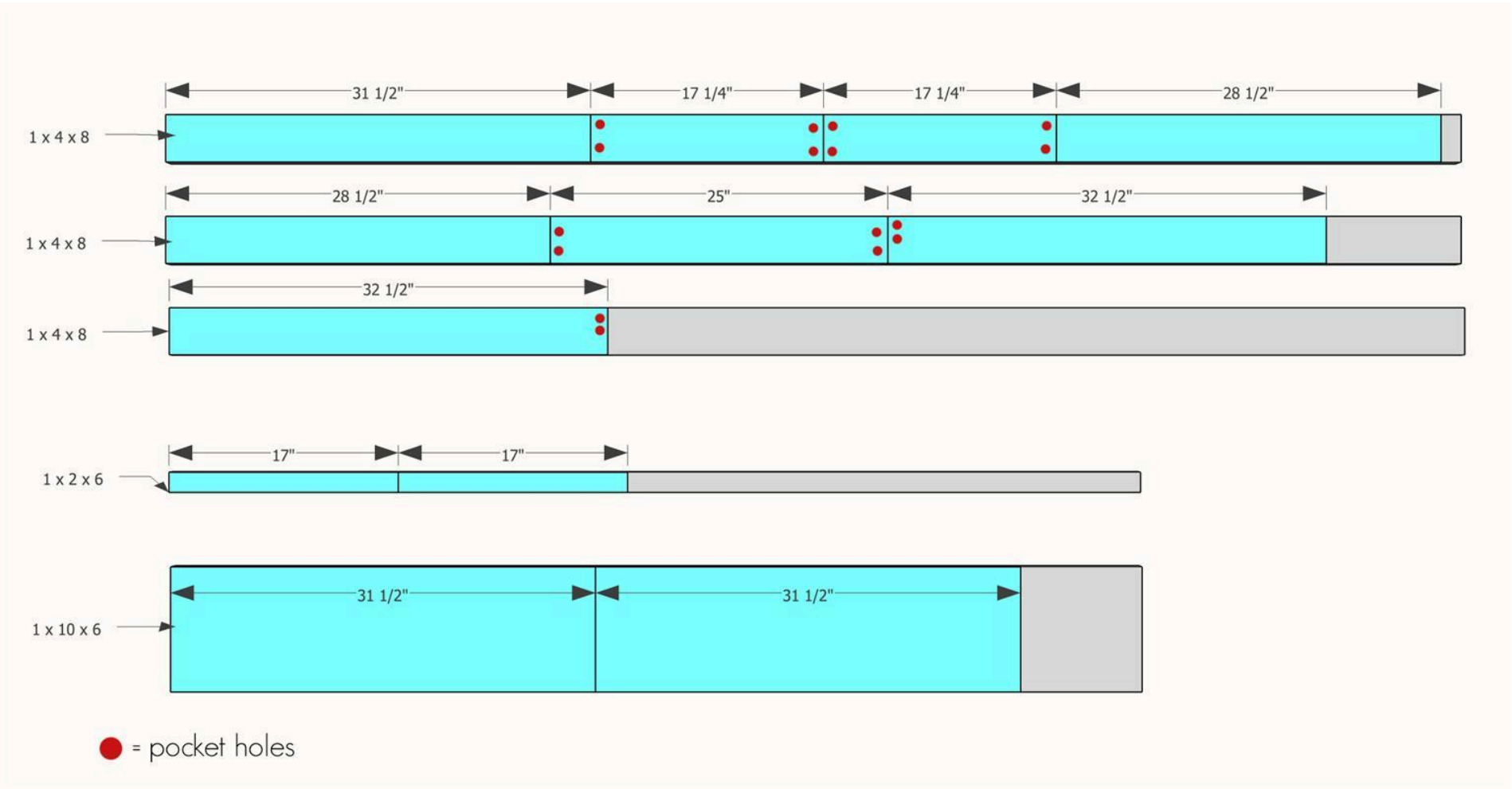
- 3** Board , 1x4 , 96"
- 1** Plywood , 3/4" Thick , Full Sheet
- 1** Plywood , 1/2" Thick , Half Sheet
- 1** Plywood , 1/4" Thick , Half Sheet
- 1** Board , 1x2 , 72"
- 1** Board , 1x10 , 72"

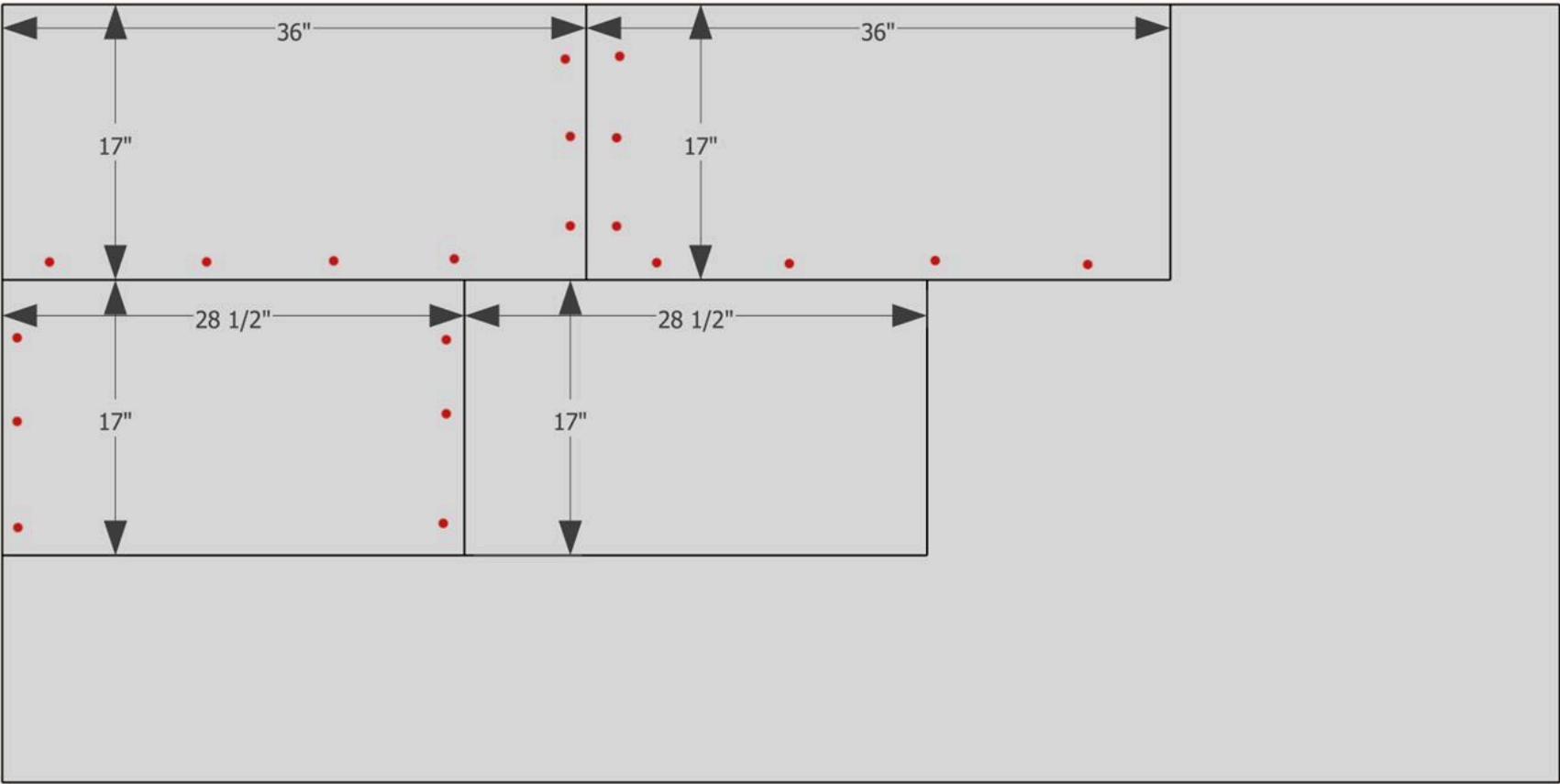
Hardware & Supplies

- 2** Hinges
- 1** Black Barrel Bolt
- 40** 1 1/4" Fine Kreg Jig Screws
- 150** 1 1/4" Finish Nails
- 20** 1/2" Finish Nails
- 1** Wood Glue

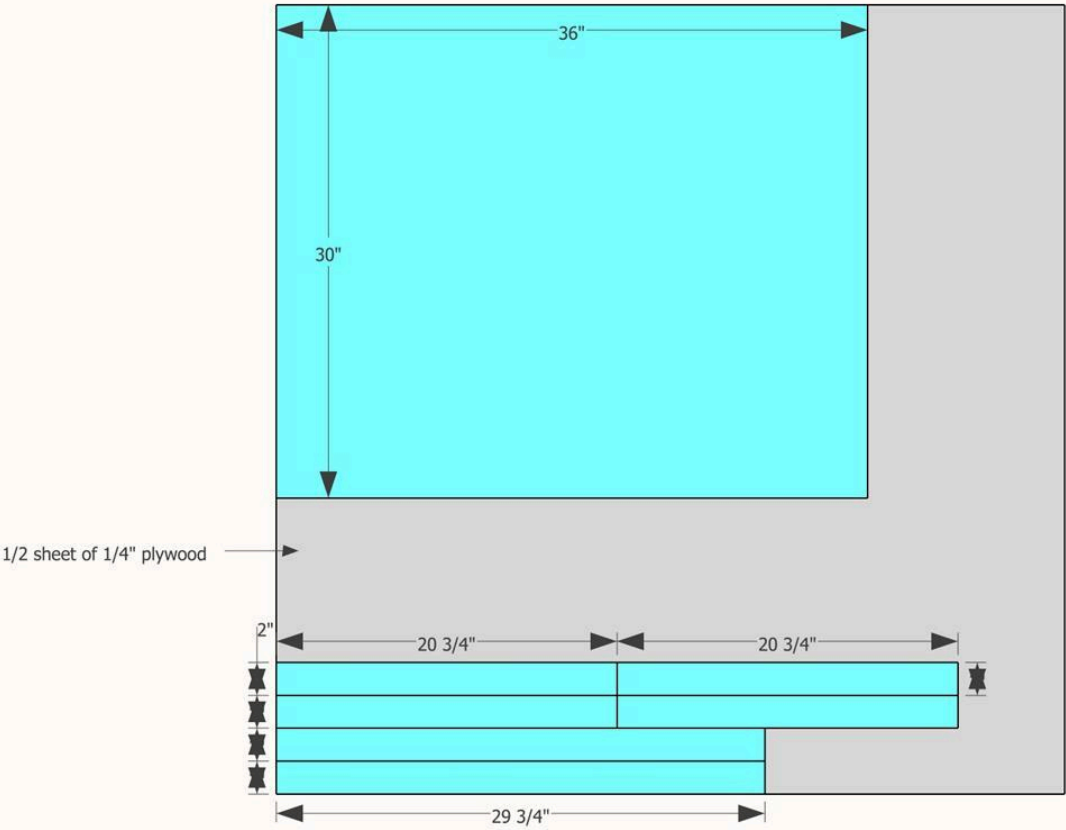
Cut List & Parts

- 2 Side Panels , 3/4" X 17" X 36"
- 2 Shelves , 3/4" X 17" X 28 1/2"
- 2 Top Support Boards , 1" X 4" X 28 1/2"
- 2 Bottom Trim Pieces , 1" X 4" X 17 1/4"
- 1 Bottom Trim Piece , 1" X 4" X 31 1/2"
- 2 Shelf Cleats , 1" X 2" X 17"
- 2 Facing - Side Pieces , 1" X 4" X 32 1/2"
- 1 Facing - Top Piece , 1" X 4" X 25"
- 1 Back Panel , 1/4" X 30" X 36"
- 2 Top Boards , 1" X 10" X 31 1/2"
- 2 Door Side Trim Pieces , 1/4" X 2" X 29 3/4"
- 4 Door Trim Pieces , 1/4" X 2" X 20 3/4"
- 1 Door , 1/2" X 24 3/4" X 29 3/4"





3/4" 4'x8' plywood ● = pocket holes



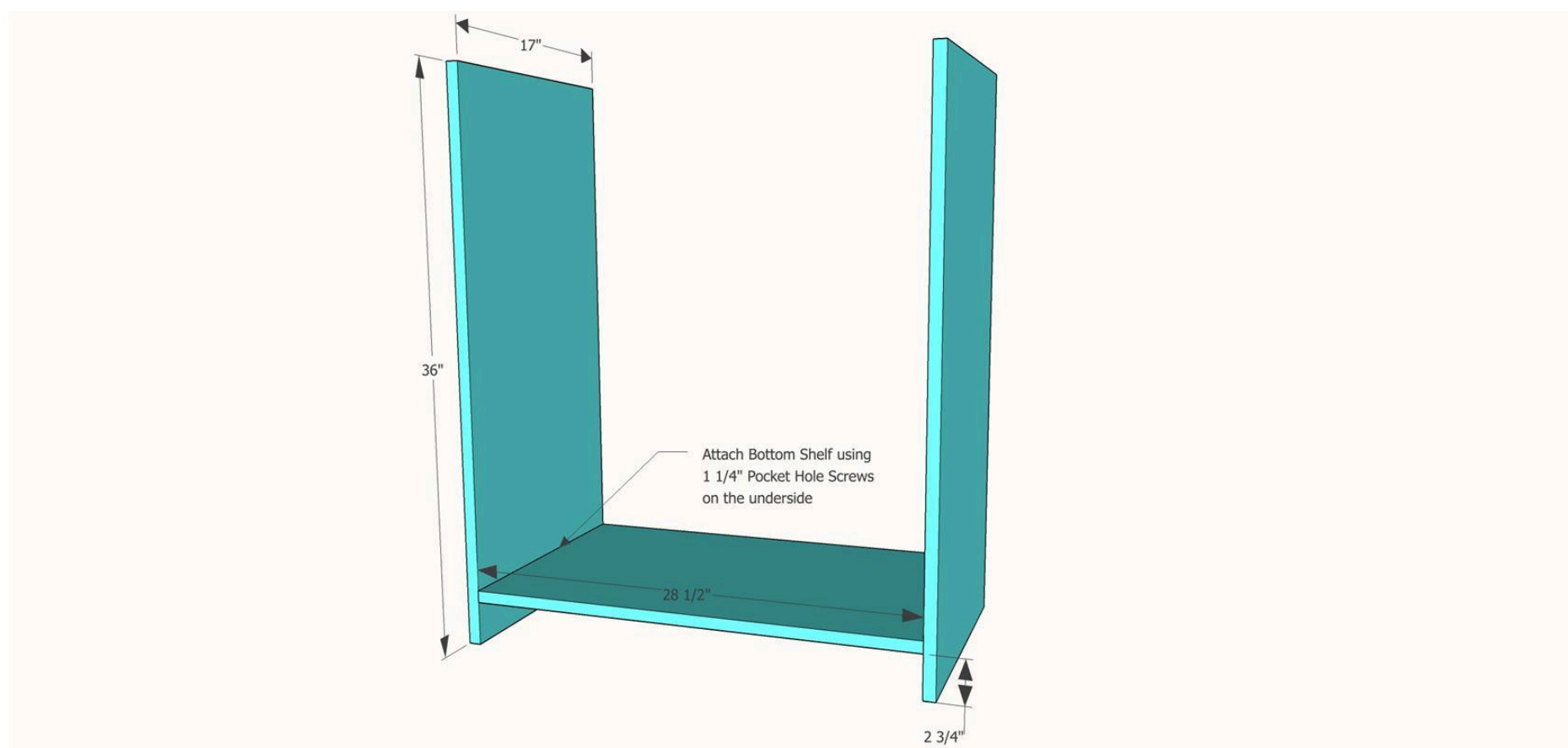
Directions

1**Step 1: Cuts and Pocket Holes**

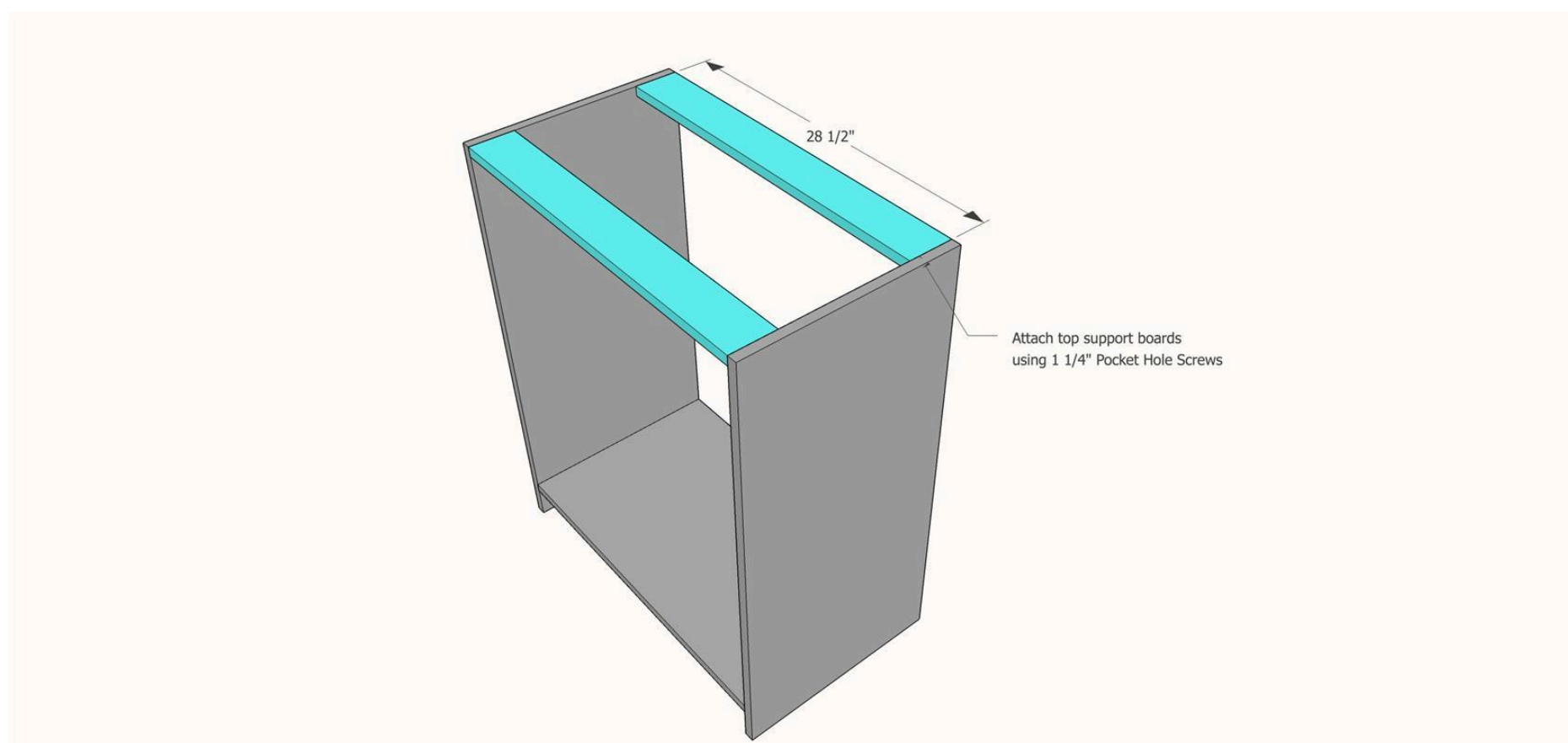
Make Cuts and create pocket holes where indicated by the red dots in the provided cut list. However, I do suggest cutting as you go in order to keep the project square.

2**Step 2: Form Box**

Using the 2 side panels and 1 shelf, attach the bottom shelf to the side panels with 1 1/4" pocket hole screws and wood glue.

**3****Step 3: Attach Top Supports**

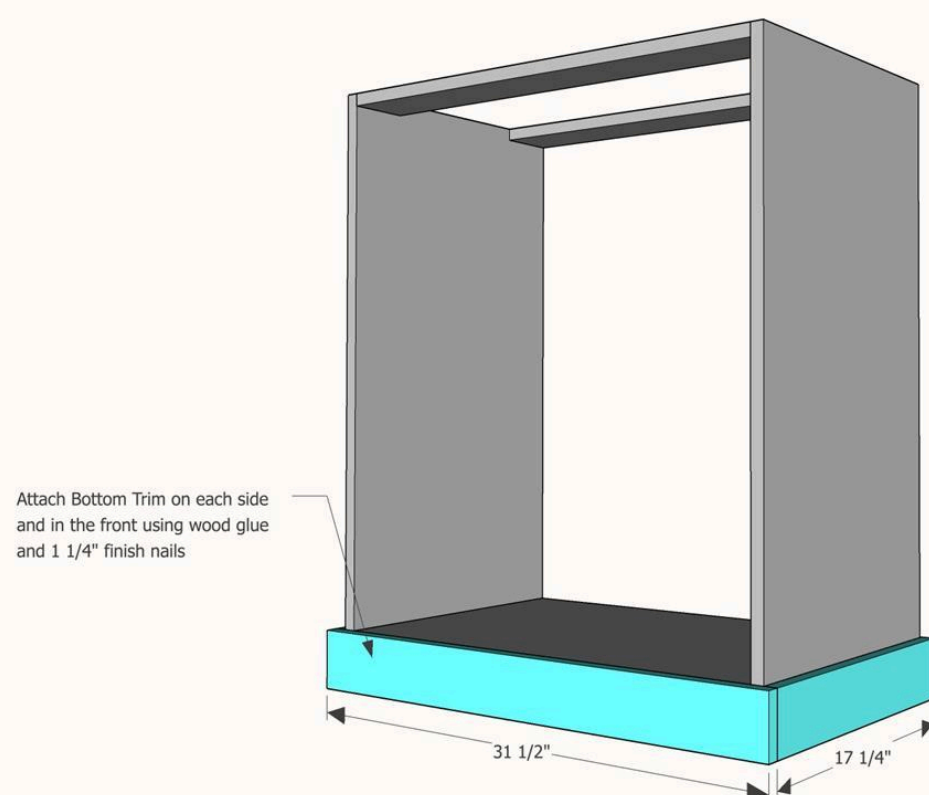
Attach top support boards to side panels using 1 1/4" Pocket Hole Screws.



4

Step 4: Add Bottom Trim

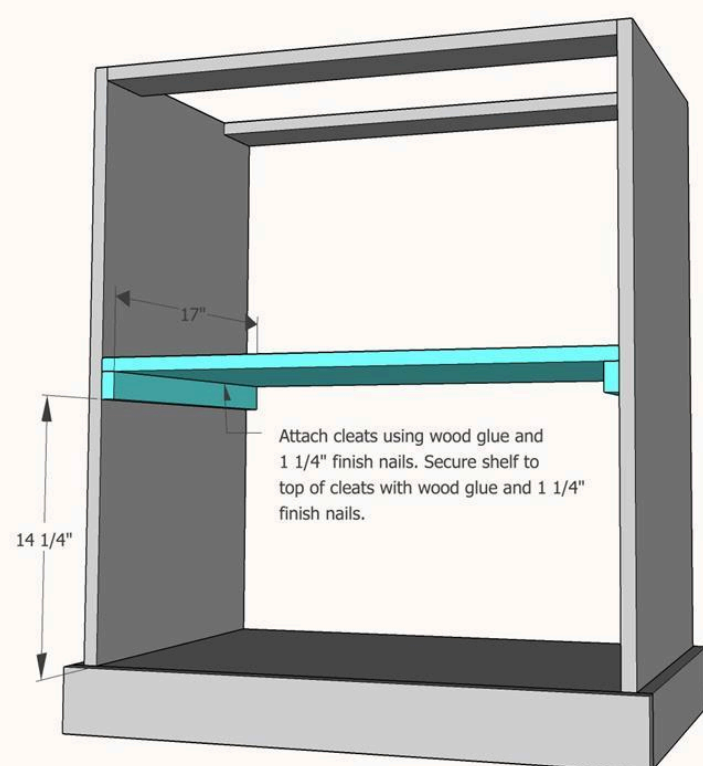
Add the bottom trim to the bottom, flush with the side panels using wood glue and 1 1/4" finish nails.



5

Step 5: Add Shelf

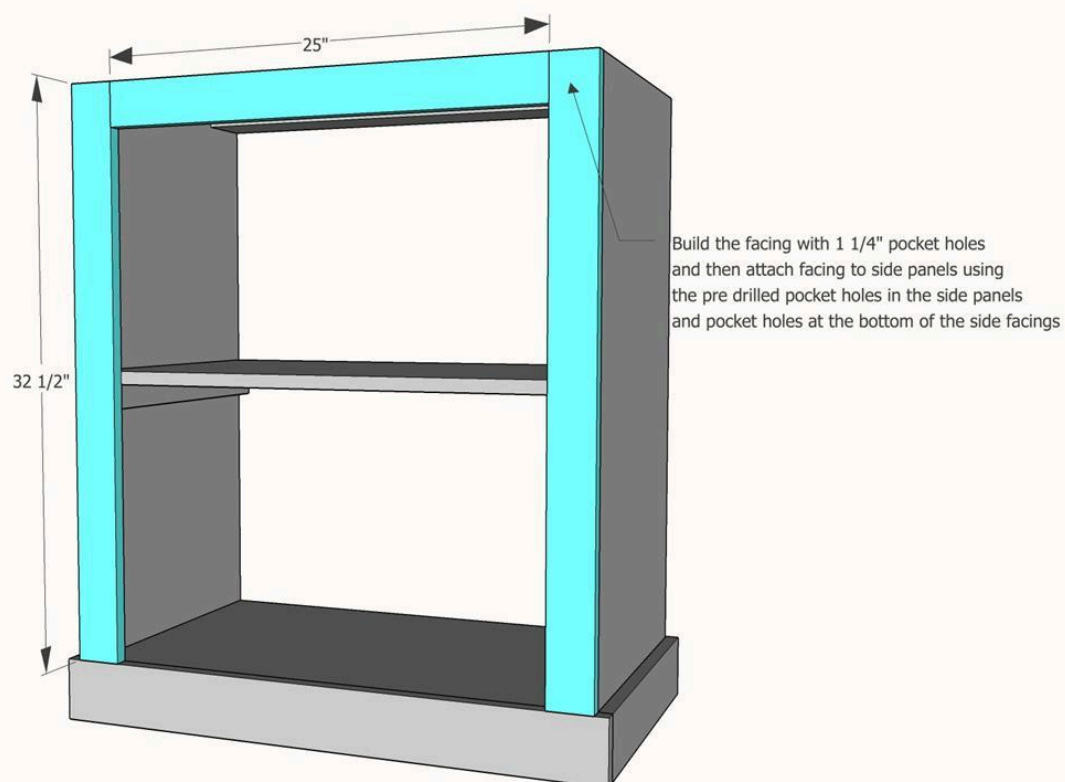
Attach cleats using wood glue and 1 1/4" finish nails. Secure shelf to top of cleats with wood glue and 1 1/4" finish nails.



6

Step 6: Attach Facing

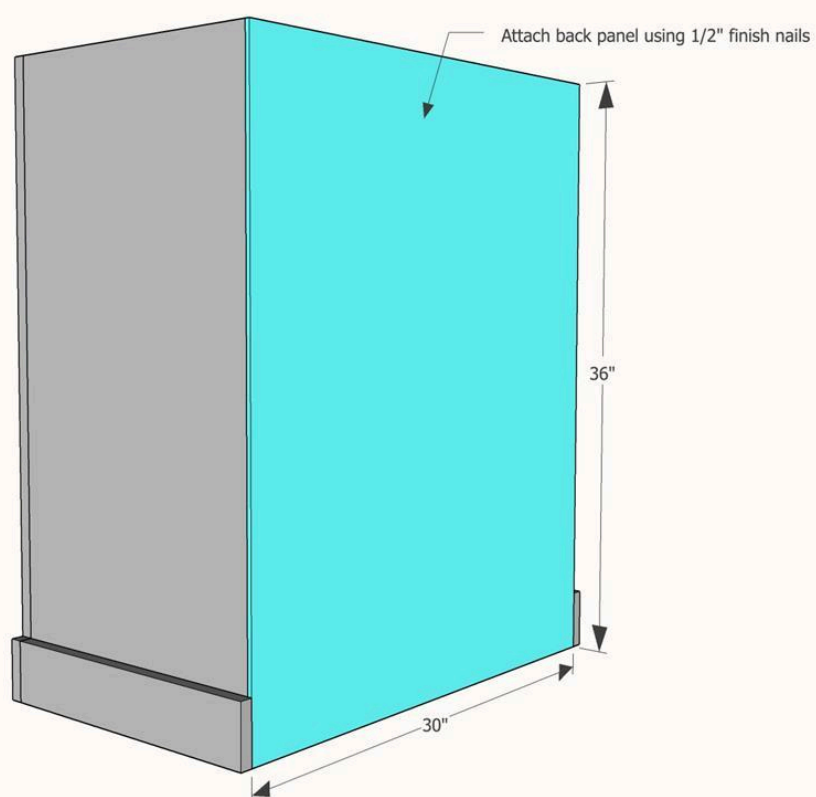
Build the facing with 1 1/4" pocket holes and then attach facing to side panels using the pre drilled pocket holes in the side panels and pocket holes at the bottom of the side facings.



7

Step 7: Attach Back Panel

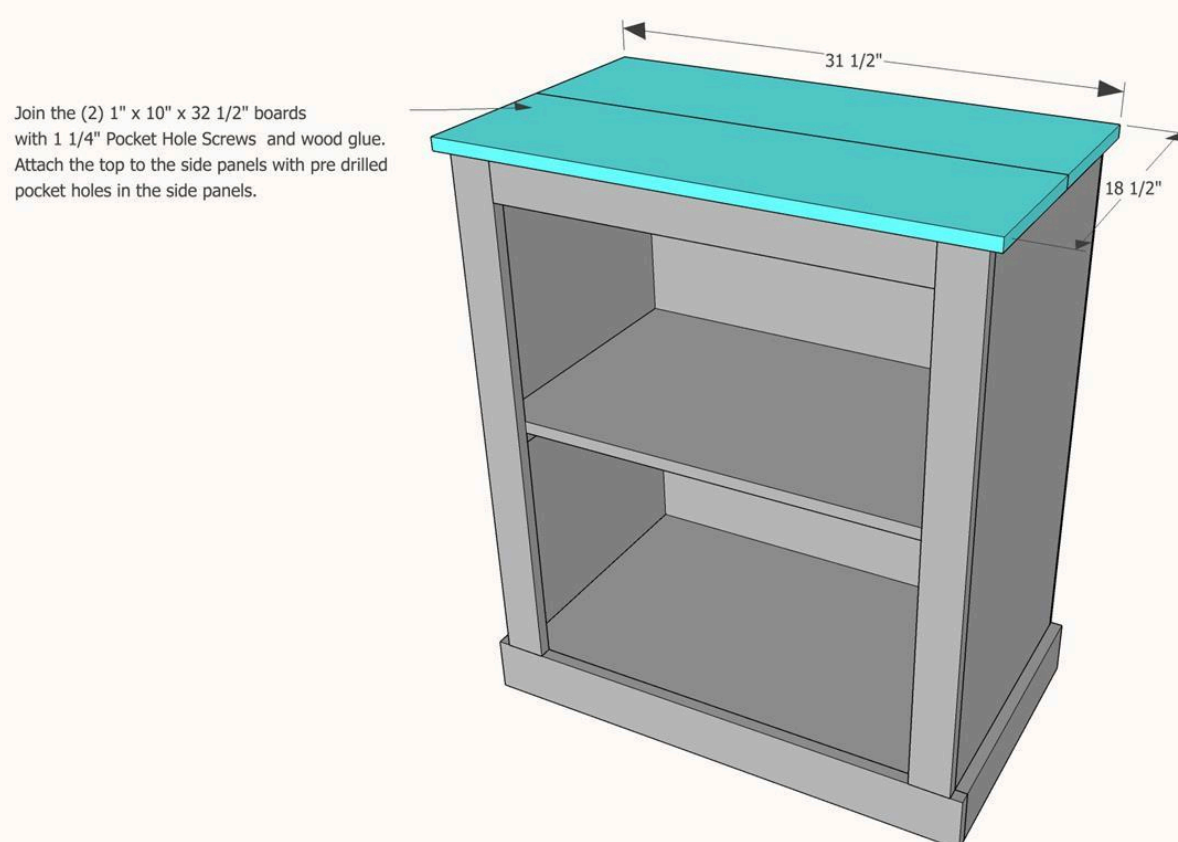
Attach Back Panel with 1/2" finish nails.



8

Step 8: Attach top

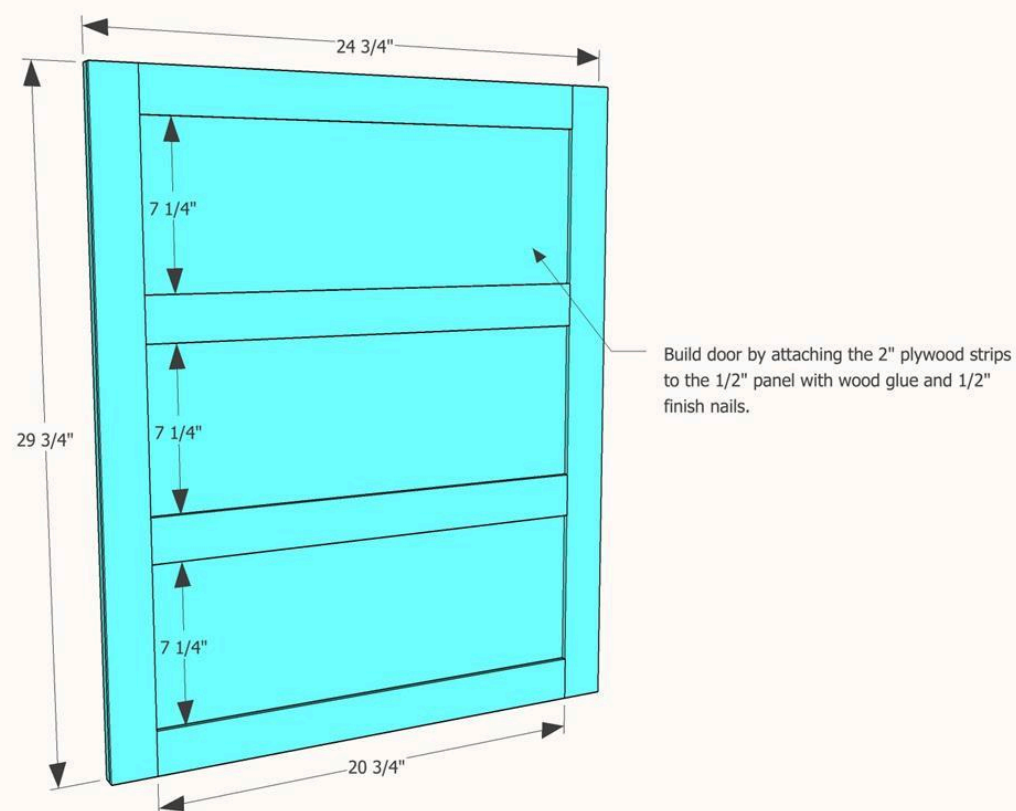
Join the (2) 1" x 10" x 32 1/2" boards with 1 1/4" Pocket Hole Screws and wood glue. Attach the top to the side panels with pre drilled pocket holes in the side panels.



9

Step 9: Build Door

Build door by attaching the 2" plywood strips to the 1/2" panel with wood glue and 1/2" finish nails.



10**Step 10: Add Hardware**

Attach the door with your T hinges leaving an 1/8" gap around the perimeter of the door. Then attach the sliding barrel bolt to the door. Finish with your desired style and enjoy!

